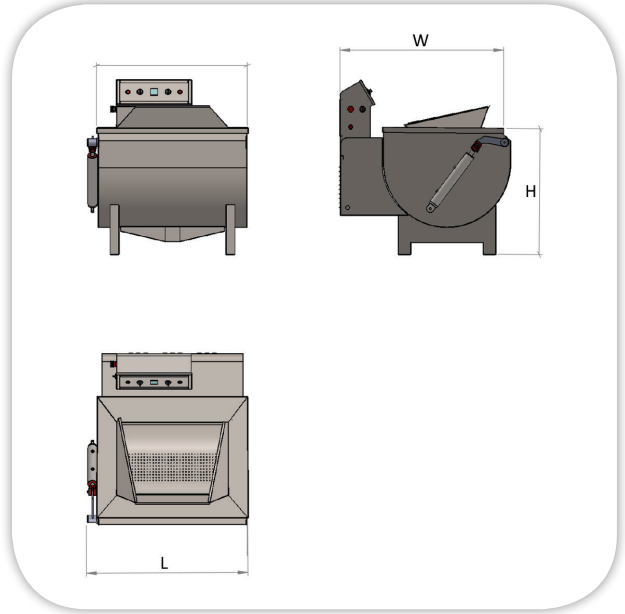
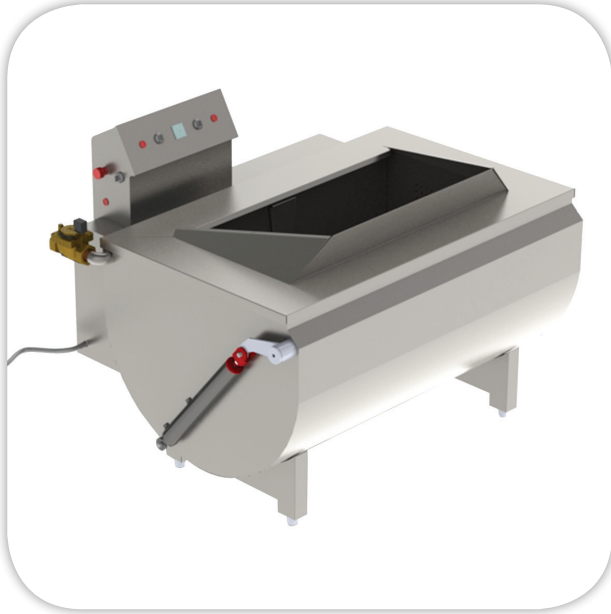


# TILTING VEGETABLE WASHER

Item: .....



MFP



## SPECIFICATIONS:

**Body:** Stainless Steel Construction (304),  
Stainless Steel perforated inner Drum, water  
inlet overflow pipe & drain & outer drum  
2" Electric gate valve.  
**Washing motor driven pump:** 2 HP/3 Phase  
**Electric Source:** kW/380V/3ph/50Hz

**Tilting:** washing drum tiltable by hydraulic  
system.

**Washing Time:** 2-3 mins

**Water inlet:** 1"

**Drainage outlet connect:** 2"

## TECHNICAL DATA:

MODEL	Dimensions (mm)			Electric Power	Vegetable Load Capacity (Kg)		Washing Drum Capacity (ltrs)	Net Weight (KG)
	L	W	H		Heavy	Leafy		
VW-600	1550	1240	850	2 kW	70	16	600	250
VW-300	1080	1140	850	2 kW	35	9	300	180

Masria, In Line with its policy to continually improve its quality, reserves the right to change specs without notice.

+202 44812326/8

masria@masria.com

masriagroup

+201 001609002/10

www.masria.com

masriagr

