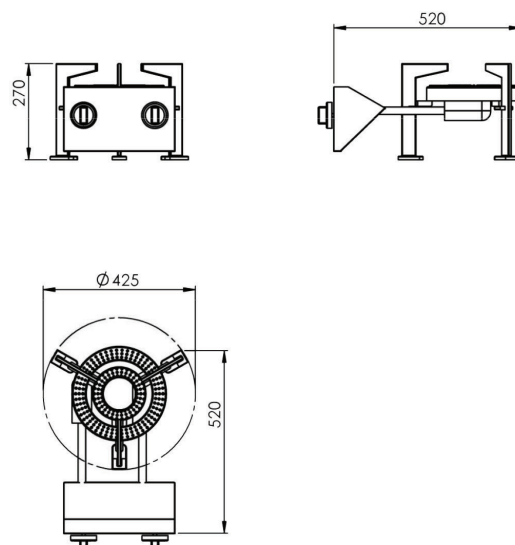
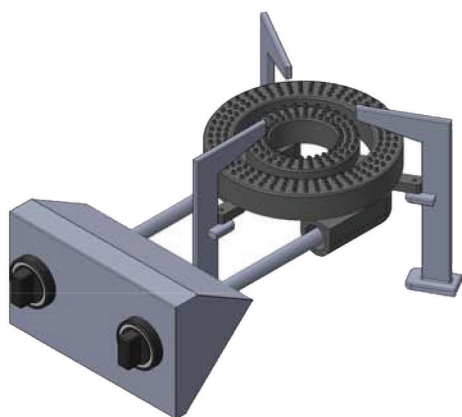


GAS STOCK POT RANGE (TWO LEVELS)

Item:

.....



SPECIFICATIONS:

Body: Painted steel construction.

Burner: Single burner, two levels, (1) 260 mm burner diameter

TECHNICAL DATA:

MODEL	Dimensions (mm)		GAS Power (kW gas)	Net Weight (Kg)
	Diameter	H		
	425	270	19.0	

Masria, In Line with its policy to continually improve its quality, reserves the right to change specs without notice.

+202 44812326/8

masria@masria.com

masriagroup

+201 001609002/10

www.masria.com

masriagr

